

Impresso Bottle Labeler

Modular 20" Unwind/Rewind Label Applicator

High Performance - Reliable - Cost Effective



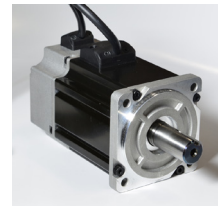
- 1** Customizable computer controls with separate enclosed on-board panel



All-in-one self-contained electronics software platform is flexible to run many different types of applications.

- 2** Brushless Servo Motor for long life.

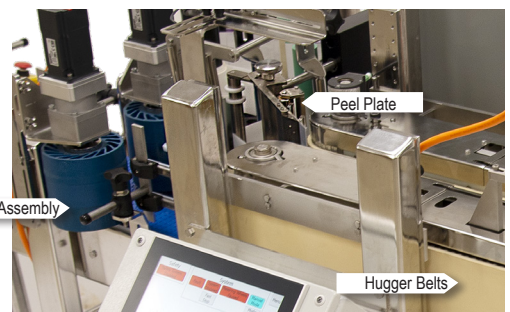
The Impresso Labeler, Metering Wheel Assembly, and Hugger Belts utilize brushless servo motors for accurate placement and precise control. Motor upgrades are available depending on application.



- 3** Transports bottles while precisely applying labels

Hugger Belt Assemblies next to the peel plate rotates the bottles as the label applicator applies the label.

Metering Wheel Assembly



Peel Plate

Hugger Belts



Impresso Bottle Label Applicator and Conveyor

Features

- Impresso Bottle Labeler precisely holds and rotates the bottle in place while accurately applying labels being transported down a conveyor.
- Standalone labeler can also easily integrate into existing production lines to create an efficient and effective production system.
- Flexible system runs a wide variety of bottles and label sizes. Set up product length, label position, and then calibrate.
- Tool-less changeover with lock handles that unscrew and then lock in new positions for quick and effortless adjustments.
- Highly adaptable software package coordinates multiple inputs for accurate label placement at high speeds.

- Stand-alone labeler or integrates with existing production lines to create a production system.
- Label detection and variable speed correction available with **Accutipping software**.
- Small compact versatile design handles up to a 20" diameter roll of labels; 4" or 8" wide available.

Industries:

- Bottling
- Pharma/Medical
- Cosmetics
- Food
- Packaging
- Cleaning Products
- Agriculture

Applications

- Applies pressure sensitive labels to cylindrical glass or plastic products of various sizes.

Technical Data: Impresso Bottle Label Applicator and Conveyor

Equipment Specifications

Typical Height	1548mm (60.9")
Typical Length	3048mm (120")
Typical Width	1754mm (69")
Maximum Speed**	Dependent on product size
Power Requirements	110/220V 50-60Hz 6A
Operating Temp.*	10°-35°C (50°-95°F)
Weight Ranges	greater than 250 lbs.

*All MFT Automation equipment can be designed to meet your specific production requirements. Please contact one of our experienced Application Engineers to discuss many solution options available to you.

**Subject to product review, dependent on product size, label size, label application format and other application.

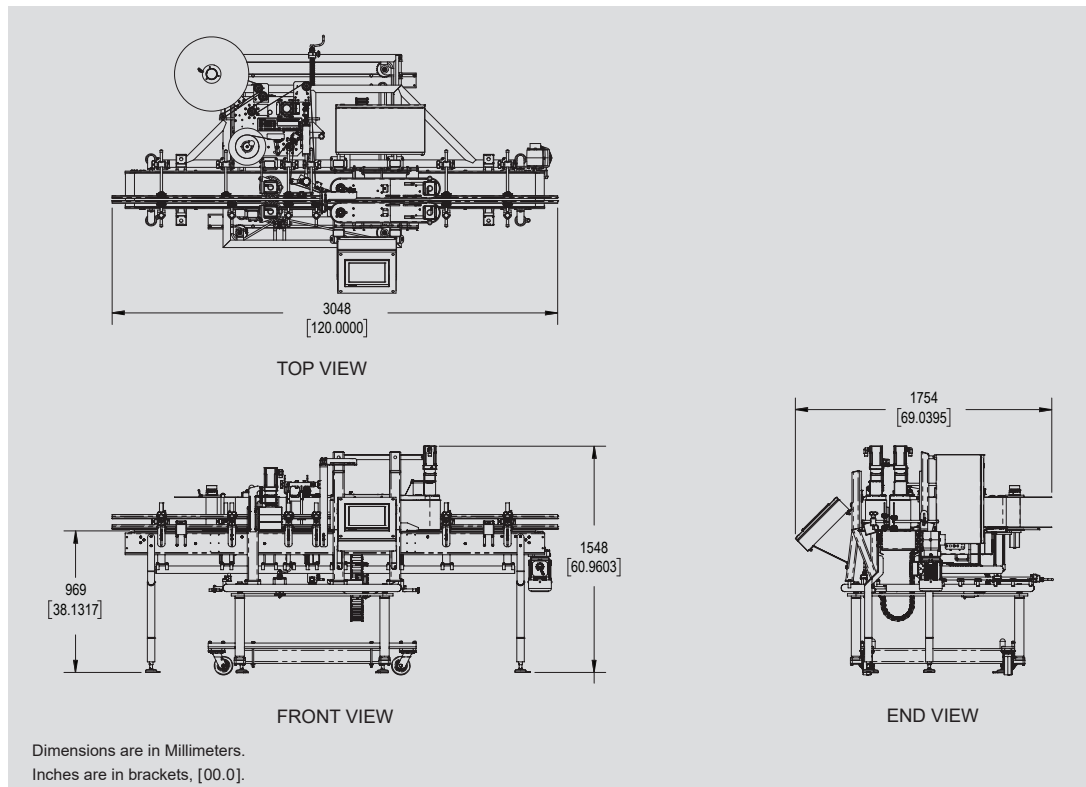
Label Specifications

Minimum Size	10mm† (W) x 10mm (L)
Maximum Size 4 inch width*	100mm (W) x 1000mm (L)
Maximum Size 8 inch width*	203mm (W) x 1000mm (L)

*All MFT Automation equipment can be designed to meet your specific production requirements. Please contact one of our experienced Application Engineers to discuss many solution options available to you.



Standard Dimensional Drawing



All specifications are subject to change without notice.

Technical Support Services



Our dedicated team of experienced Technicians and Application Engineers have the proper training and necessary credentials to answer any questions and offer system solution recommendations for your project needs.

For Technical Assistance, call 651-407-3100, select option 2.

MFT Automation provides high performance friction feeding and labeling solutions throughout the world. With state-of-the-art control technology and robust mechanics, our products feed and label more quickly and accurately to provide customers with a greater value of return. All feeders, labelers and accessories can easily be integrated with other machines to provide a total system solution for any application.



www.mftautomation.com

MFT AUTOMATION
4821 WHITE BEAR PARKWAY
ST. PAUL, MN 55110
© 2021 MFT AUTOMATION

PHONE: 651-407-3100
FAX: 651-407-3199
MARKETING@MULTIFEEDER.COM
10/2021 SELL SHEET #128