

Industrial Performance Friction Feeder Family
900 Millimeter Width Capability

MFT 950 ip³

High Performance - Reliable - Cost Effective

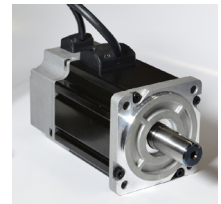
1 3 Piece Shaft allowing for easy belt changeover

Standard 1 inch hardend stainless steel shafts, low gearing, and sealed bearings for smooth feeding, maximum life and 24-hour day operation.



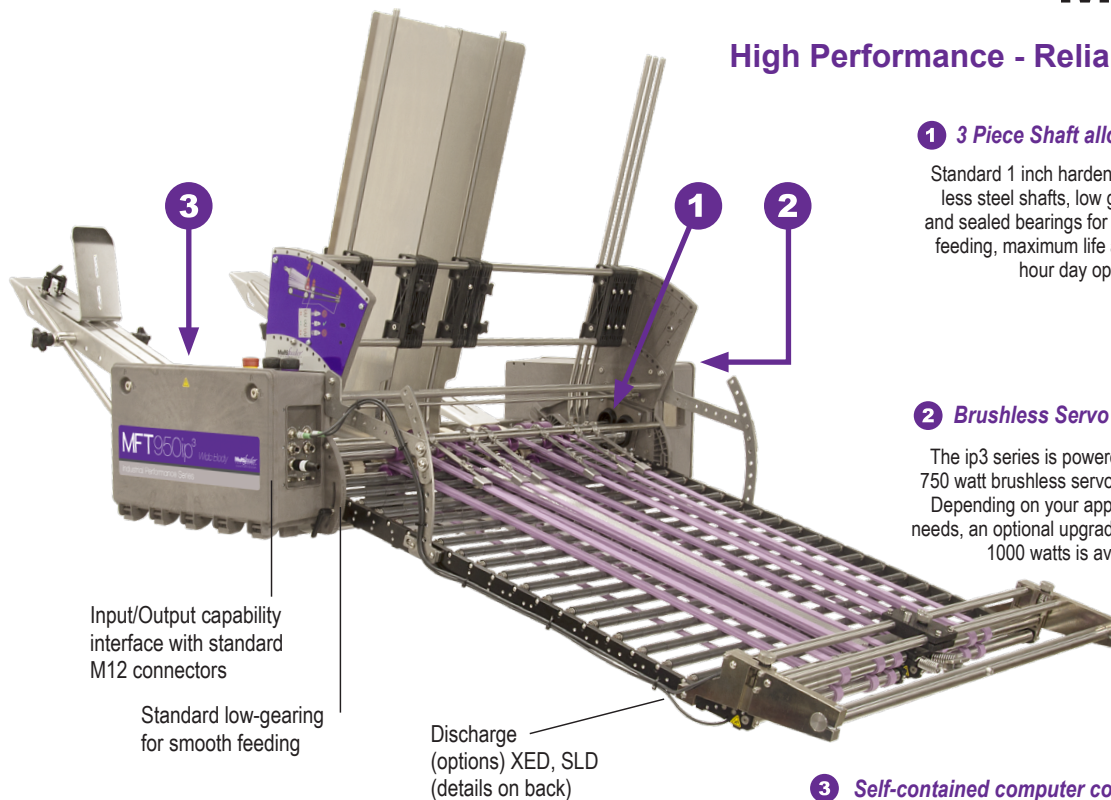
2 Brushless Servo Motor for precise placement

The ip3 series is powered by a 750 watt brushless servo motor. Depending on your application needs, an optional upgrade up to 1000 watts is available.



3 Self-contained computer controls with on-board panel

MFT Automation's all-in-one self-contained electronics software platform is flexible to run many different types of applications. Designed for easy interface with existing computer, PLC or other host machinery.



Input/Output capability interface with standard M12 connectors

Standard low-gearing for smooth feeding

Discharge (options) XED, SLD (details on back)



Friction Feeder MFT 950SLD ip3 shown with a SLD (900 mm) discharge

► Features

- Modular mechanical design for custom configurations to handle extra wide product. One inch stainless steel shafts with low gearing and sealed bearings for smooth uninterrupted feeding. Robust design for extended service life.
- Highly adaptable software package ensures flexible and precise control.
- Infrared sensor allows for accurate count using double-detect and overlap detection.
- On-board interface display panel provides for efficient operation.
- Interfacing is made easy with the use of standard industry compliant connectors.
- Performance designed for long production runs.
- Patented "feed separating" mechanism.

Industries:

- Pharmaceutical
- Food
- Cosmetics
- Packaging
- Financial
- Printing
- Robotics

Common equipment that the feeder can be integrated into:

- Imaging lines
- Shrinkwrappers
- Existing bases
- Conveyers
- Folder/Gluer
- Flow Wrappers
- Poly-baggers
- Case-packers
- Cartoners
- Order fulfillment
- Collators
- Banders

Applications

- Insertion into a catch-tray, box or conveyor.
- Deliver a product for secondary operation such as printing or label application.
- Batching, collating systems, and barcode/vision systems.

Technical Data: MFT 950 ip³ Wide Body Friction Feeder

Equipment Specifications

Typical Height	953mm (38")
Typical Length (XED)	793mm (31")
Typical Width	1237mm (48.7")
Maximum Belt Speed	80 Meters per Minute*
Power Requirements	208-240V 50-60Hz 6A
Operating Temp.	10°-35°C (50°-95°F)
Weight Ranges	Approx. 205 lbs.
Operating Humidity	30-90%

Product Specifications

Minimum Size	20mm† (W) x 50mm (L)†
Maximum Size*	900mm (W) x 325mm (L)‡
Minimum Thickness	0.075mm (.003")
Maximum Thickness	25mm

† Minimum product length may require narrow belt configuration.

‡ Maximum Product Length is dependent on product, equipment configuration and application. Longer lengths are available with optional upgrades.

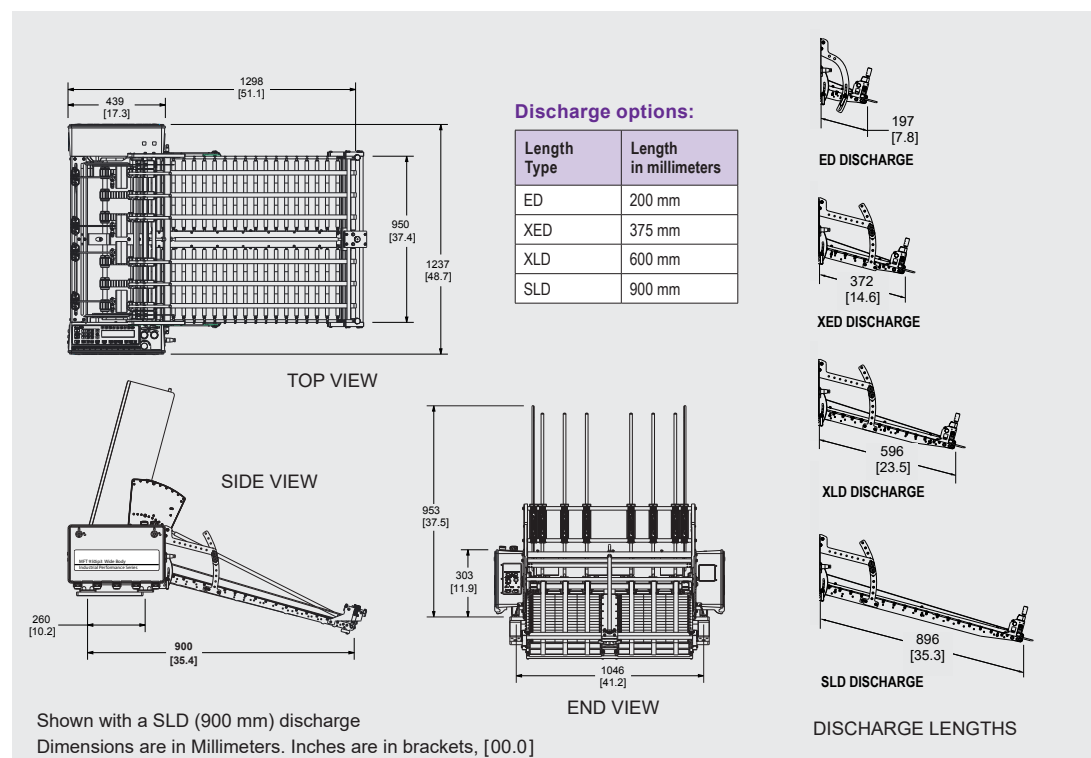
*All MFT Automation equipment can be designed to meet your specific production requirements. Please contact one of our experienced Application Engineers to discuss many solution options available to you.

Product examples to deliver through feeder:

The increased discharge width of the 950 ip³ allows large oversized products to feed.

- Bags
- Pouches
- Pamphlets
- Card Stock Products
- Gift Cards
- Clear-Film Plastics- Coupons
- Magnets
- Bandages
- Carton Blanks
- Tyvek® Sheets
- Pharma Inserts
- And more

Standard Dimensional Drawing



All specifications are subject to change without notice.

MFT Automation provides high premium performance friction feeding and labeling system solutions throughout the world. With state-of-the-art control technology, our products feed more quickly and accurately to provide customers with a greater value of return. All feeders and accessories can easily be integrated with other machines to provide a total system solution for any application.

Technical Support Services

Our dedicated team of experienced Technicians and Application Engineers have the proper training and necessary credentials to answer any questions and offer system solution recommendations for your project needs. Contact us at: (651) 407-3100, Option 2

