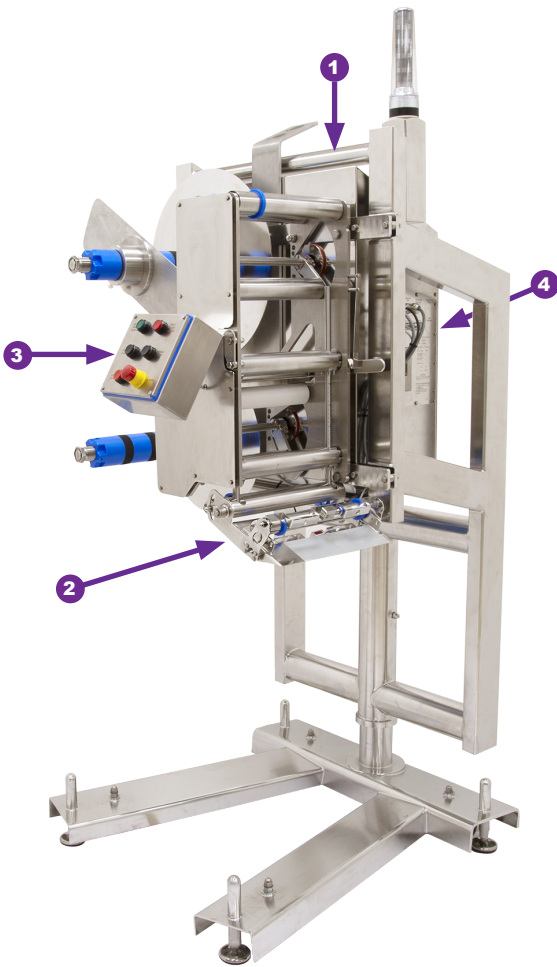


# Hygienic Washdown Labeler 300\*

One Piece 20" Unwind/Rewind Label Applicator with 12" Peel Plate

High Performance - Reliable - Cost Effective



CE Hygienic Washdown Labeler Applicator (stand optional)

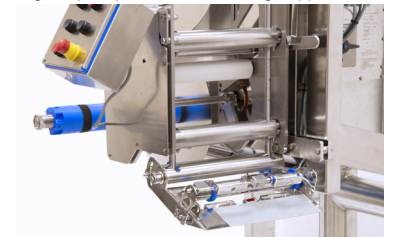
**1 Hygienic Washdown Labeler Control Panel**

Equipped with customizable computer controls with on-board panel for flexible controls.



**2 Durable steel shafts for strength**

Stainless steel shafts and sealed bearings will provide maximum life expectancy. Adjustable angular peel plate for a wide range applications.



**3 Hygienic Washdown Labeler Remote Panel**

Remote control Panel panel for easy control from the loading/operator side. Includes E- Stop button for emergency stops to safely disconnect power source.



**4 Brushless Servo Motor for accurate placement**

A standard 500 to 1000 watt brushless servo motor per axis depending on application is available for repeatable accuracy.



**Features**

- The Hygienic Washdown Labeler 300\* is a robust labeler, engineered with type 304 stainless steel and passivated for corrosion resistance. The Labeler's Clean-in-Place design provides minimal contamination points. This allows for minimal disassembly with easy cleaning and maintenance, therefore reducing your risk of contamination.
- Computer-controlled brushless servo motors for flexible high speed accuracy. Prevents interruptions for precise product labeling placement. Adjustable angular peel plate for a wide range of applications. Highly adaptable software package with optional upgrades.
- The Hygienic Labeler meets IP69K requirements and meets and exceeds IP66/NEMA4X standards to ensure consistent washdown performance.
- The Hygienic Washdown Labeler is available for food grade applications such as pizza, bakery, meat, clean rooms, and medical devices. The Hygienic Labeler can meet various sanitary level requirements depending on your application needs.

- The Hygienic Labeler is easy to use and versatile to interface using standard industry compliant cables. The Labeler utilizes a small footprint and is easily mobile to quickly change work station locations.

**Industries:**

- Pharma/Medical
- Food
- Clean room environments
- Pizza Manufacturing
- Bakery
- Meat packaging

**Common equipment that the feeder can be integrated into:**

- Conveyers
- Web Press
- Folder Gluer

**Applications**

- Adhere labels to packaging, cartons, folders and more

**Certifications**

- All external components meet IP69K and meets and exceeds IP66/NEMA4X.

**Technical Data:**

**MFT Automation Hygienic Washdown Labeler 300 (12") Applicator**

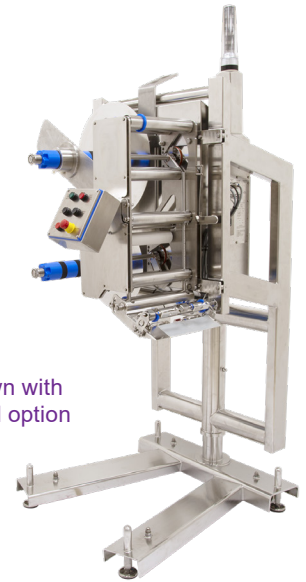
**Equipment Specifications**

Typical Height	2386mm (94")
Typical Length	1538mm (61")
Typical Width	909mm (36")
Maximum Speed	125 meters per minute
Power Requirements	110/220V 50-60Hz 6A
Operating Temp.	0 °-35°C (30°-95°F)
Weight Ranges	400 - 1000 lbs.
Labeler without stand:	400 lbs.
Labeler with Stand	600 lbs.

**Label Specifications**

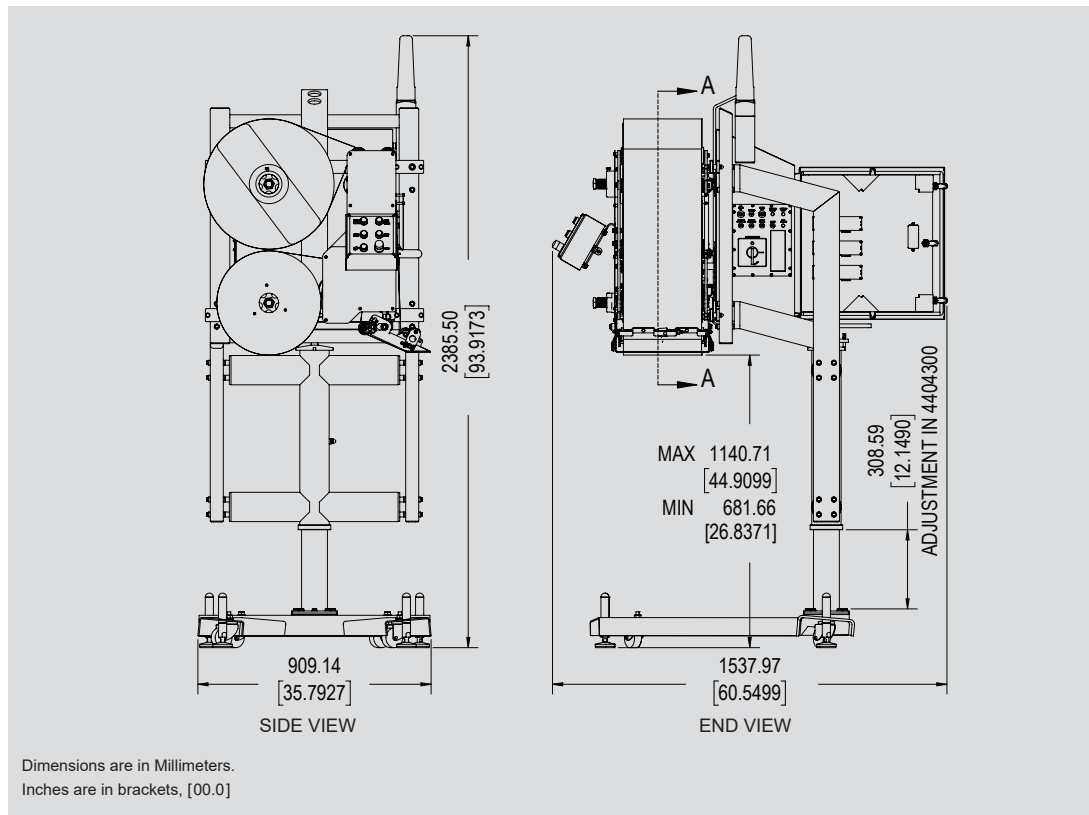
Minimum Size	10mm† (W) x 10mm (L)
Maximum Size*	304mm (W) x 1000mm (L)

\*All MFT Automation® equipment can be designed to meet your specific production requirements. Please contact one of our experienced Application Engineers to discuss many solution options available to you.



Shown with stand option

**Standard Dimensional Drawing**



All specifications are subject to change without notice.

**Technical Support Services**



Our dedicated team of experienced Technicians and Application Engineers have the proper training and necessary credentials to answer any questions and offer system solution recommendations for your project needs.

For Technical Assistance, call 651-407-3100, select option 2.

**MFT Automation** provides high performance friction feeding and labeling solutions throughout the world. With state-of-the-art control technology and robust mechanics, our products feed more quickly and accurately to provide customers with a greater value of return. All feeders, labelers and accessories can easily be integrated with other machines to provide a total system solution for any application.

