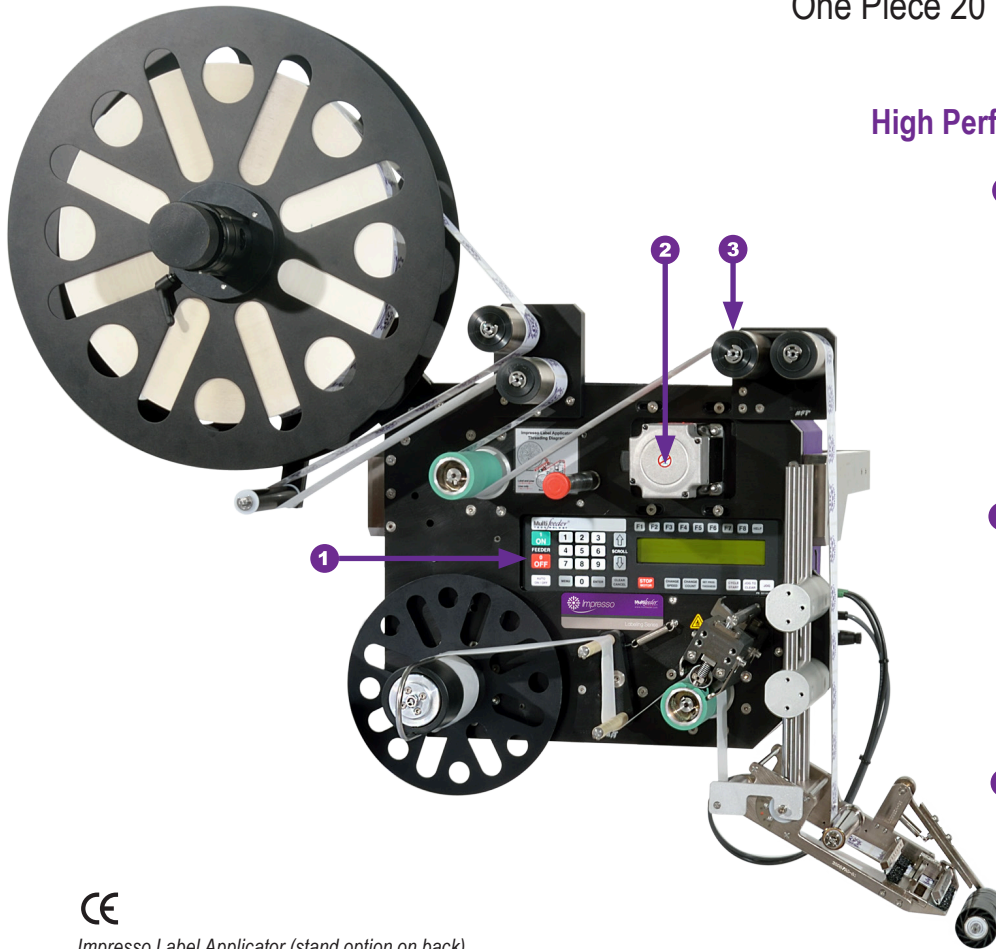


# Impresso™

One Piece 20" Unwind/Rewind Label Applicator

High Performance - Reliable - Cost Effective



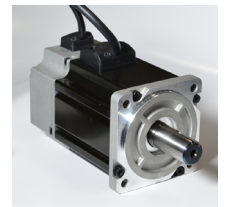
- 1 Customizable computer controls with on-board panel for accurate placement**



All-in-one self-contained electronics software platform is flexible to run many different types of applications.

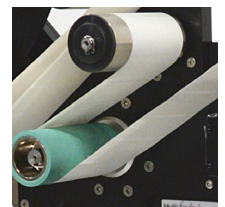
- 2 Brushless Servo Motor for accurate placement**

Powered by a standard 1000 watt brushless servo motor for repeatable accuracy.



- 3 Durable steel shafts for strength**

Hardened stainless steel shafts and sealed bearings will provide maximum life expectancy.



Impresso Label Applicator (stand option on back)

## Features

- Equipped with an independently powered 1000 watt brushless servo motor for unwind and rewind.
- Designed for flexibility to stand-alone or integrate with existing production lines.
- Highly adaptable software package can integrate multiple sensor triggers to achieve accurate label placement at high speeds.
- Small compact design is versatile to handle up to a 20" diameter roll of labels; 4" wide. Available up to 8" labels.

## Industries:

- Pharmaceutical
- Food
- Cosmetics
- Packaging
- Financial
- Printing
- Robotics

## Common equipment that the labeler can be integrated into:

- Extended Content Labeling
- Direct Mail Tabbing
- Gap-less Magnet Application
- Gift Card Applications

## Applications

- Adhere labels to packaging, cartons, folders and more.

**Technical Data:**  
**MFT Automation Impresso Label Applicator**

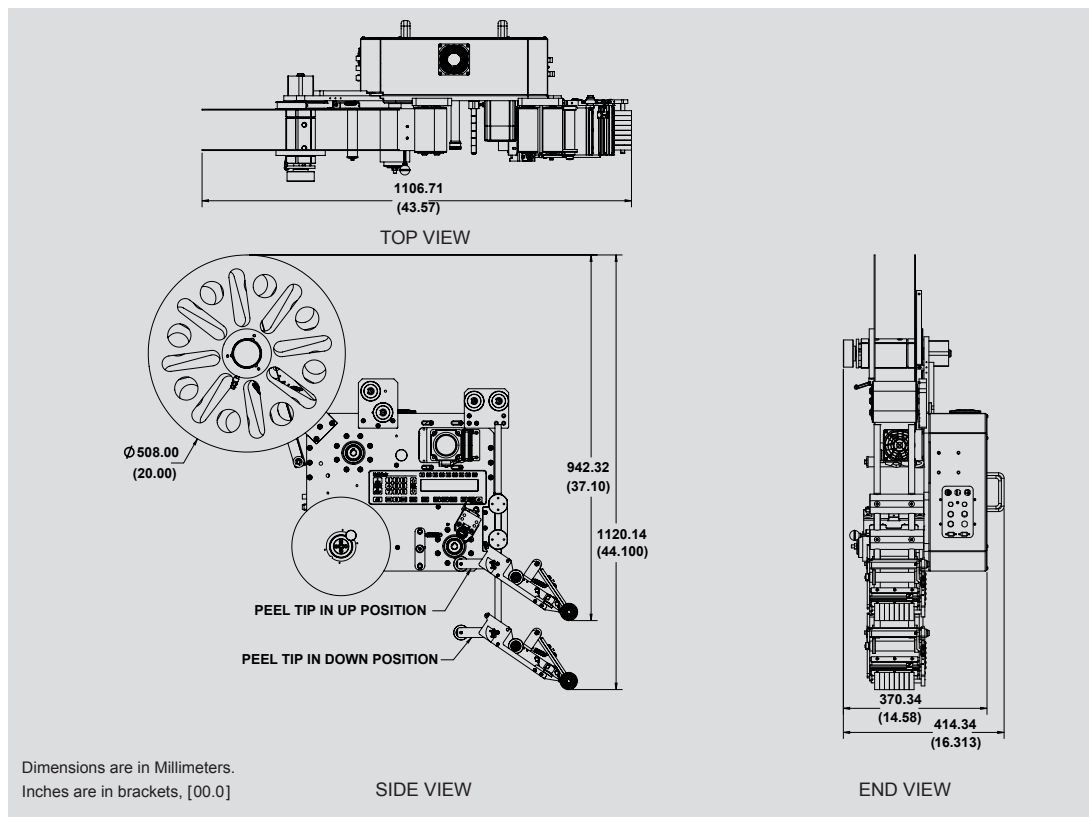
**Equipment Specifications**

Typical Height	942mm (37.1")
Typical Length	1106mm (43.6")
Typical Width	370mm (14.6")
Maximum Speed	70 meters per minute
Power Requirements	110/220V 50-60Hz 6A
Operating Temp.	10°-35°C (50°-95°F)
Weight Ranges	Less than 80 lbs.

**Stand Option**



**Standard Dimensional Drawing**



All specifications are subject to change without notice.

**Technical Support Services**



Our dedicated team of experienced Technicians and Application Engineers have the proper training and necessary credentials to answer any questions and offer system solution recommendations for your project needs.

For Technical Assistance, call 651-407-3100, select option 2.

**MFT Automation** provides high performance friction feeding and labeling solutions throughout the world. With state-of-the-art control technology and robust mechanics, our products feed more quickly and accurately to provide customers with a greater value of return. All feeders, labelers and accessories can easily be integrated with other machines to provide a total system solution for any application.

