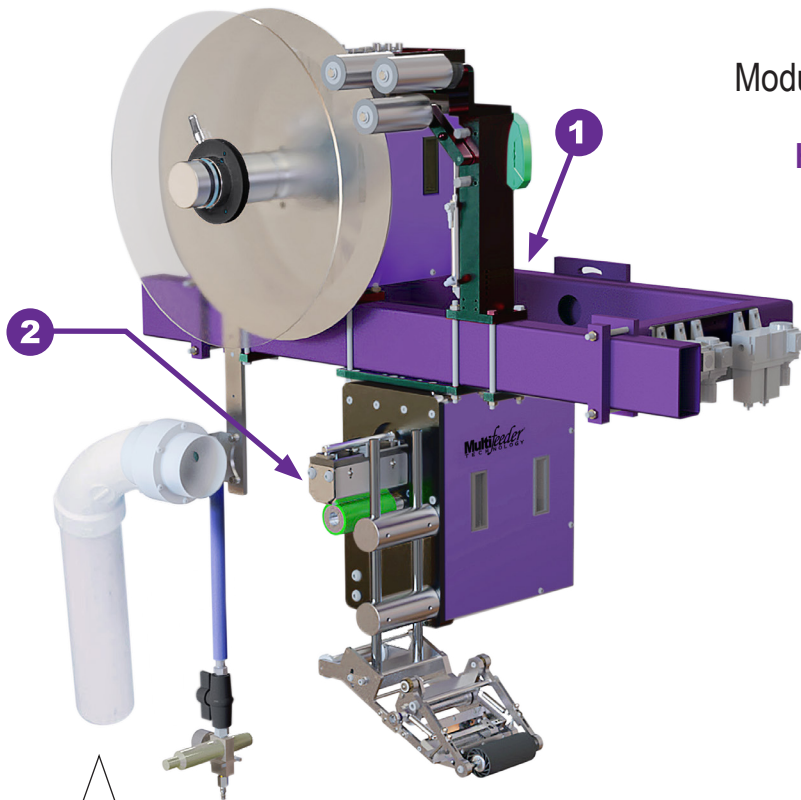


102hsm Labeler

Modular 24"* Unwind/Rewind Label Applicator

High Performance - Reliable - Cost Effective



Vacuum powered
takeaway system for
fast liner disposal.

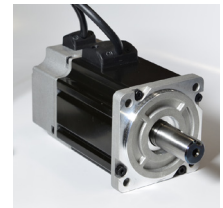
1 Customizable computer controls with separate enclosed on-board panel



All-in-one self-contained electronics software platform is flexible to run many different types of applications.

2 750 watt brushless servo motor

Powered by an independent brushless servo motor for repeatable accuracy. A motor upgrade to 1000 watts is available depending on the application. A high performance package is available.



3 Encoder speed compensation

Optional upgrade encoder speed compensation for accurate placement.



Optional remote control panel available



102hsm Label Applicator

Features

- Equipped with an independently powerful synchronized 750 watt servo drive motor for unwind with effortless label operation.
- Designed for flexibility. Built-in communication for easy integration into your existing system. Stand-alone or add to a larger production line.
- Highly adaptable software package with sophisticated algorithms, integrates multiple sensor triggers to achieve accurate label placement at high speeds. Label detection and variable speed correction available with AccuTipping.
- Small compact design is versatile to handle up to a 24" diameter roll of labels; 4" or 8" wide standard or maximum.
- User-friendly, easy-to-operate labeler, uses a small footprint on factory floor.

Industries:

- Pharma/Medical
- Cosmetics
- Financial
- Robotics
- Food
- Packaging
- Printing

Common equipment integration:

- Extended Content Labeling
- Gift Card Applications
- Direct Mail Tabbing
- High Speed Web
- Gap-less Magnet Application

Applications

- Adhere labels to packaging, cartons, folders and more.

*Note: If wide or heavy rolls are required, the diameter could be limited to a smaller label amount based on testing.

Technical Data: 102hsm Label Applicator

Equipment Specifications

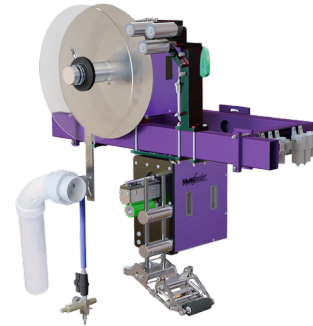
Typical Height	943mm (37.1")
Typical Length	535mm (21.1")
Typical Width	447mm (17.6")
Maximum Speed**	Contact us with your application details to determine a solution for your needs
Power Requirements	110/220V 50-60Hz 6A
Operating Temp.*	10°-35°C (50°-95°F)
Weight Ranges	Less than 250 lbs.

Label Specifications

Minimum Size**	5mm (W) x 5mm (L)
Maximum Size 4 inch width*	100mm (W) x 1000mm (L)
Maximum Size 8 inch width*	203mm (W) x 1000mm (L)

*All Multifeed Technology® equipment can be designed to meet your specific production requirements. Please contact one of our experienced Application Engineers to discuss many solution options available to you.

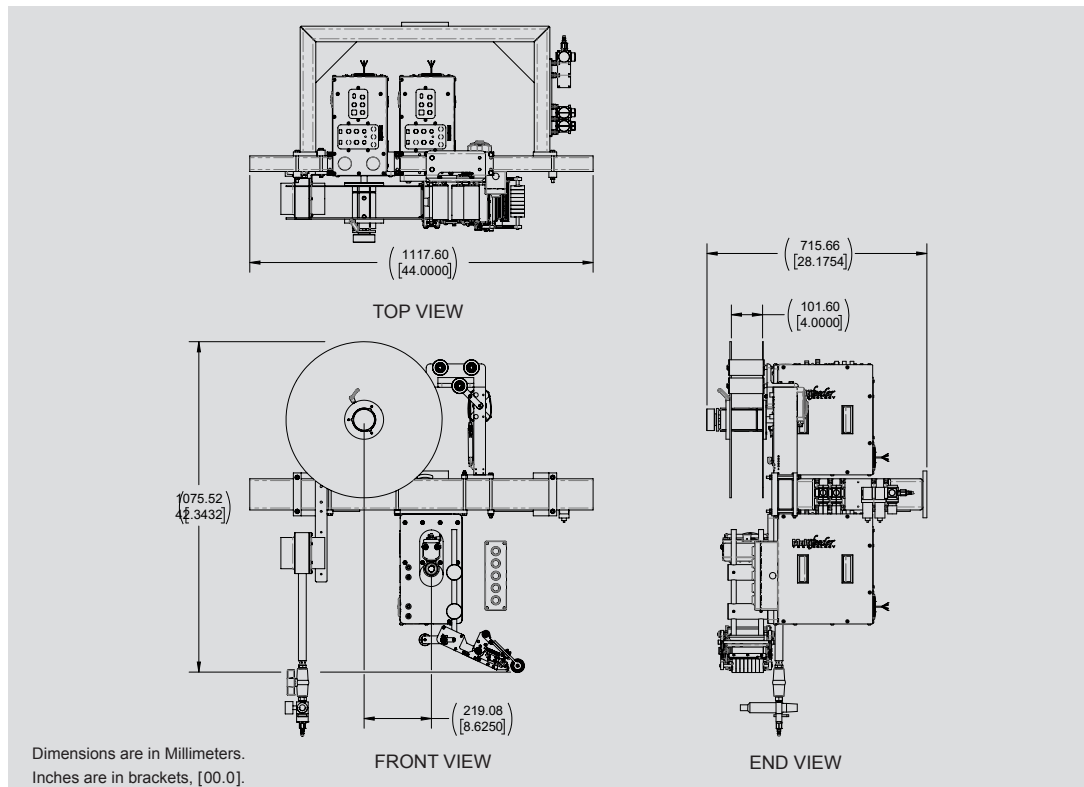
**Labels at this minimum size may require additional tooling



*All Multifeed Technology® equipment can be designed to meet your specific production requirements. Please contact one of our experienced Application Engineers to discuss many solution options available to you.

**Speeds in excess of 300 PPM would require a high performance package. See your sales representative.

Standard Dimensional Drawing



All specifications are subject to change without notice.

Technical Support Services



Our dedicated team of experienced Technicians and Application Engineers have the proper training and necessary credentials to answer any questions and offer system solution recommendations for your project needs.

For Technical Assistance, call 651-407-3100, select option 2.

MFT Automation provides high performance friction feeding and labeling solutions throughout the world. With state-of-the-art control technology and robust mechanics, our products feed and label more quickly and accurately to provide customers with a greater value of return. All feeders, labelers and accessories can easily be integrated with other machines to provide a total system solution for any application.



www.mftautomation.com

MFT AUTOMATION
4821 WHITE BEAR PARKWAY
ST. PAUL, MN 55110
© 2021 MFT AUTOMATION

PHONE: 651-407-3100
FAX: 651-407-3199
MARKETING@MULTIFEEDER.COM
10/2021 SELL SHEET #013