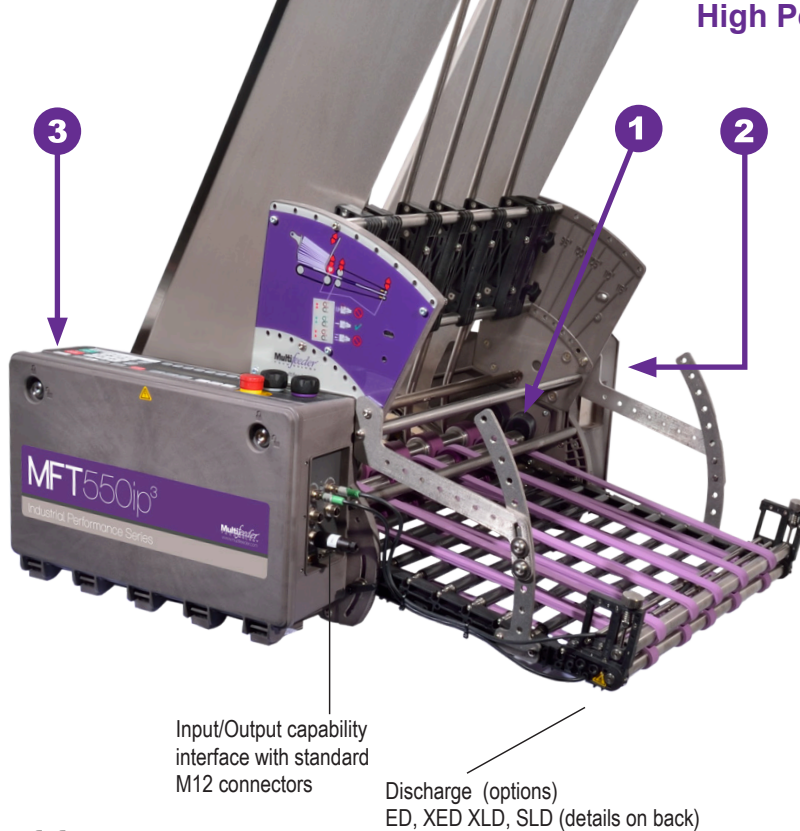


## Industrial Performance Friction Feeder Family 500 Millimeter Width Capability

# MFT 550 ip<sup>3</sup>

**High Performance - Reliable - Cost Effective**



Friction Feeder MFT 550XED ip<sup>3</sup> assembly unit

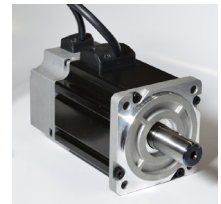
### 1 3 Piece Shaft allowing for easy belt changeover

The hardened stainless steel shafts and sealed bearings will provide maximum life expectancy and 24-hour a day operation.



### 2 Brushless Servo Motor for precise placement

The ip series is powered by a 750 watt brushless servo motor. Depending on your application needs, an optional upgrade up to 1000 watts is available.



### 3 Self-contained computer controls with on-board panel

MFT's all-in-one self-contained electronics software platform is flexible to run many different types of applications. Designed for easy interface with existing computer, PLC or other host machinery.



## Features

- Mechanical design is modular for custom configurations to meet your product needs
- Highly adaptable software package ensures flexible and precise control
- Infrared sensor allows for accurate count using double-detect and overlap detection
- Single-sided controls provide for efficient operation
- Easy and versatile to interface using standard industry compliant connectors
- Performance designed for long production runs
- Patented "feed separating" mechanism
- Closed loop system with encoder feedback

## Industries:

- Pharmaceutical
- Food
- Cosmetics
- Packaging
- Financial
- Printing
- Robotics

## Common equipment that the feeder can be integrated into:

- Imaging lines
- Shrinkwrappers
- Existing bases
- Conveyers
- Folder/Gluer
- Flow Wrappers
- Poly-baggers
- Case-packers
- Cartoners
- Order fulfillment
- Collators
- Banders

## Applications

- Insertion into a catch-tray, box or conveyor
- Deliver a product to a secondary application
- Batching, high speed tipping or affixing, collating systems and barcode/vision systems

## Technical Data: MFT 550 ip<sup>3</sup> Friction Feeder

### Equipment Specifications

Typical Height	856mm (31.7")
Typical Length (ED)	645mm (25.4")
Typical Width	837mm (32.9")
Maximum Belt Speed	140 Meters per Minute*
Power Requirements	110/220V 50-60Hz 6A
Operating Temp.	10°-35°C (50°-95°F)
Weight Ranges	75-125 lbs.
Operating Humidity	30-90

### Product Specifications

Minimum Size	20mm† (W) x 50mm (L)
Maximum Size*	500mm (W) x 325mm (L)‡
Minimum Thickness	0.075mm (.003")
Maximum Thickness	25mm

† Minimum product length may require narrow belt configuration.

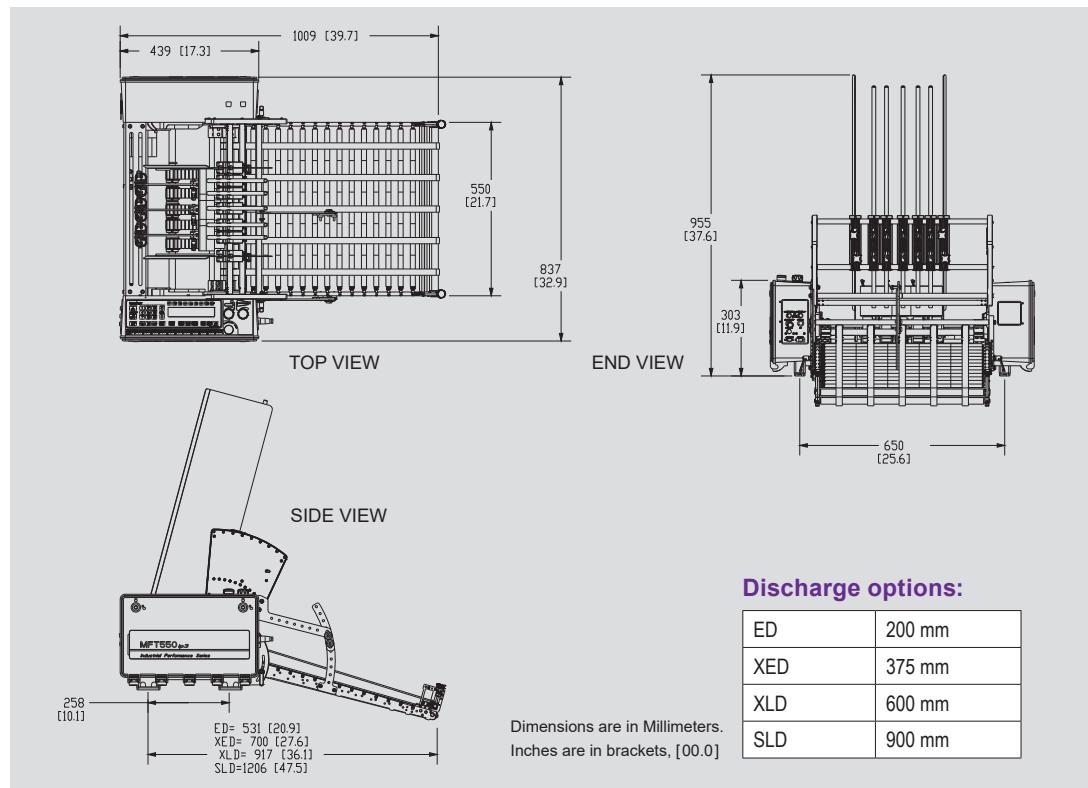
‡ Maximum Product Length is dependent on product, equipment configuration and application. Longer lengths are available with optional upgrades.

\*All MFT Automation equipment can be designed to meet your specific production requirements. Please contact one of our experienced Application Engineers to discuss many solution options available to you.

### Product examples to deliver through feeder:

- Bags
- Pouches
- Pamphlets
- Card Stock Products
- Gift Cards
- Clear-Film Plastics- Coupons
- Magnets
- Bandages
- Carton Blanks
- Tyvek® Sheets
- Pharma Inserts
- And more

### Standard Dimensional Drawing



All specifications are subject to change without notice.

### Technical Support Services

Our dedicated team of experienced Technicians and Application Engineers have the proper training and necessary credentials to answer any questions and offer system solution recommendations for your project needs. Contact us at: (651) 407-3100 ext 123

**MFT Automation** provides high premium performance friction feeding and labeling system solutions throughout the world. With state-of-the-art control technology, our products feed more quickly and accurately to provide customers with a greater value of return. All feeders and accessories can easily be integrated with other machines to provide a total system solution for any application.



www.mftautomation.com

**MFT AUTOMATION**  
4821 WHITE BEAR PARKWAY  
ST. PAUL, MN 55110  
© 2021 MFT AUTOMATION

PHONE: 651-407-3100  
FAX: 651-407-3199  
MARKETING@MULTIFEEDER.COM  
10/2021 SELL SHEET #006