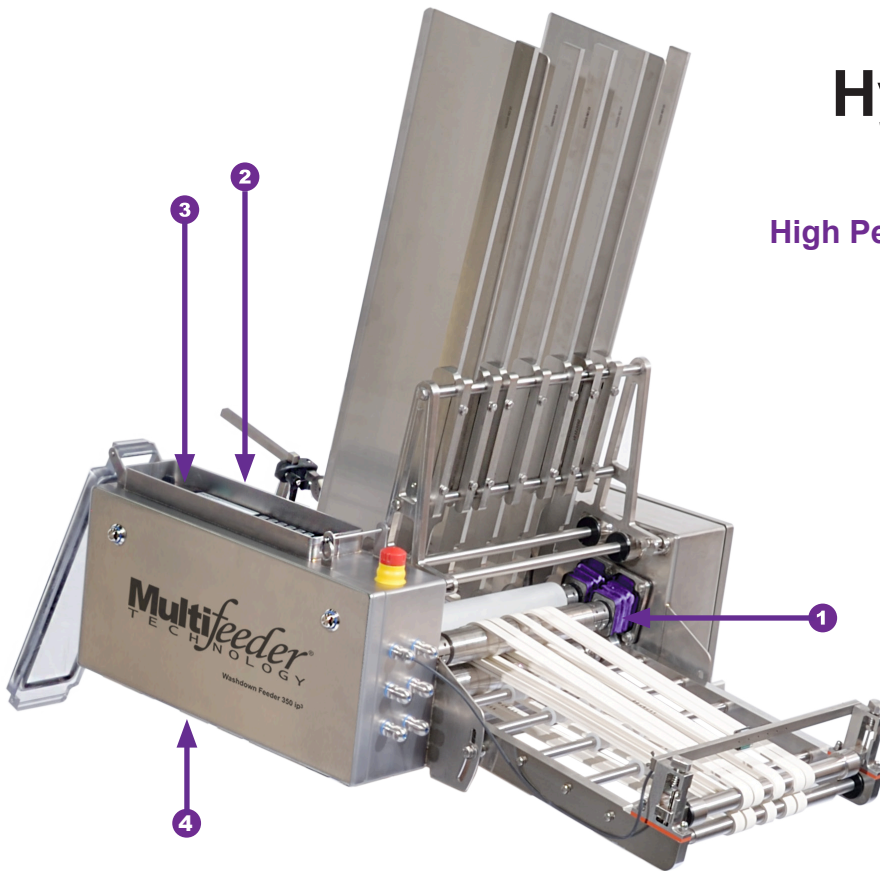


Industrial Performance Friction Feeder Family
300 Millimeter Width Capability

Hygienic Washdown Feeder 300*

High Performance - Reliable - Cost Effective



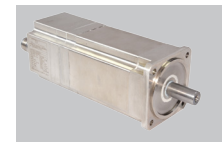
1 3 Piece Shaft allowing for easy belt changeover

Type 304 stainless steel shafts and sealed bearings will provide maximum life expectancy and 24-hour per day operation.



2 Brushless Servo Motor for precise placement

The ip series is powered by a 1200 watt brushless servo motor. Depending on your application needs, an optional upgrade up to 1500 watts is available.



3 Self-contained computer controls with on-board panel

Protected in a 304 stainless steel enclosure for washdown applications. Designed for easy interface with existing computer, PLC or other host



4 Sanitary enclosures, bearings and cables for easy cleaning

*Patent Pending

Hygienic Washdown 300ip³ Friction Feeder

Features

- Engineered with type 304 stainless steel and passivated for corrosion resistance, the Hygienic Washdown is constructed to provide minimal contamination points. The open design allows for minimal disassembly with easy cleaning and maintenance, therefore reducing your risk of contamination.
- Computer-controlled brushless servo motor technology prevents production interruptions for precise product placement. Highly adaptable software package with optional upgrades.
- Resistance to moisture and corrosion. Equivalent to NEMA rated 4X enclosures.
- FDA compliant feed belts are available for food grade applications. The 300ip³ can meet various sanitary level requirements depending on your application needs.
- Easy and versatile to interface using standard industry compliant cables. Small footprint, easily mobile.

Industries:

- Pharmaceutical
- Food
- Clean room environments

Common equipment that the feeder can be integrated into:

- Conveyers
- Poly-baggers
- Shrinkwrappers
- Collators
- Existing bases
- Flow Wrappers
- Cartoners
- Banders
- Case-packers

Applications

- Insertion into a catch-tray, box or conveyor.
- Deliver a product to a secondary application.
- Batching, high speed tipping or affixing, collating systems and barcode/vision systems.

Certifications

- All components are certified as IP66 or better to ensure consistent washdown performance.
- Meets NEMA4X standards for indoor and outdoor protection from hazardous parts, solid foreign objects, water, rain, sleet, ice, snow and corrosion.

Technical Data: Hygienic Washdown Feeder 300

Equipment Specifications

Typical Height	1008mm (39.7")
Typical Length (XED)	943mm (37.1")
Typical Width	728mm (28.7")
Maximum Belt Speed	140 Meters per Minute*
Power Requirements	110/220V 50-60Hz 6A
Operating Temp.*	2°- 35°C (35°-95°F)
Weight Ranges	150 -250 lbs.
Operating Humidity	30-100

*Higher operating temperatures may require external cooling.

Product Specifications

Minimum Size	25mm† (W) x 40mm (L)
Maximum Size*	300mm (W) x 325mm (L)‡
Minimum Thickness	0.075mm (.003")
Maximum Thickness	25mm

† Minimum product length may require small product kit. (Subject to testing).

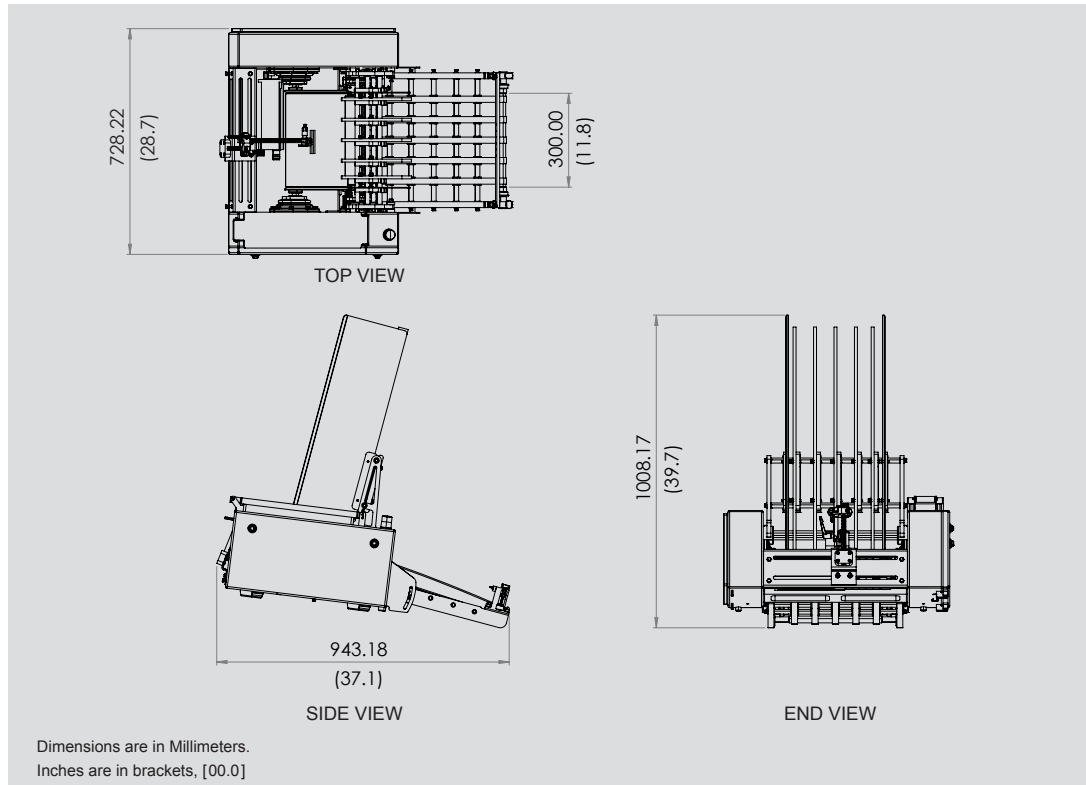
‡ Maximum Product Length is dependent on product, equipment configuration and application.

*All Multifeeder Technology® equipment can be designed to meet your specific production requirements. Please contact one of our experienced Application Engineers to discuss many solution options available to you.

Product examples to deliver through feeder:

- Pizza top sheet and cardboard
- Wax slip sheets for pizzas, meat, dairy/cheese, tortillas, bakery items
- Cooking bottom tray
- Nutritional top sheet onto meat trays
- Cardboard cooking trays
- Pocket sleeves
- Meat soaker pads
- Coupons/promo labels
- Feeding vertical fill and seal bags
- Feeding cardboard for tray packing
- Blood test strips
- Petri test strips
- And more!

Standard Dimensional Drawing



All specifications are subject to change without notice.

Multifeeder Technology provides high performance friction feeding and labeling solutions throughout the world. With state-of-the-art control technology and robust mechanics, our products feed more quickly and accurately to provide customers with a greater value of return. All feeders, labelers and accessories can easily be integrated with other machines to provide a total system solution for any application.

Multifeeder
TECHNOLOGY

www.multifeeder.com

© 2017 Multifeeder Technology



Technical Support Services

Our dedicated team of experienced Technicians and Application Engineers have the proper training and necessary credentials to answer any questions and offer system solution recommendations for your project needs.

For Technical Assistance, call 651-407-3100, select option 2.

Multifeeder Technology®
4821 White Bear Parkway
St. Paul, MN 55110
Phone: 651-407-3100
Fax: 651-407-3199
marketing@multifeeder.com

4/2017 Sell Sheet #055