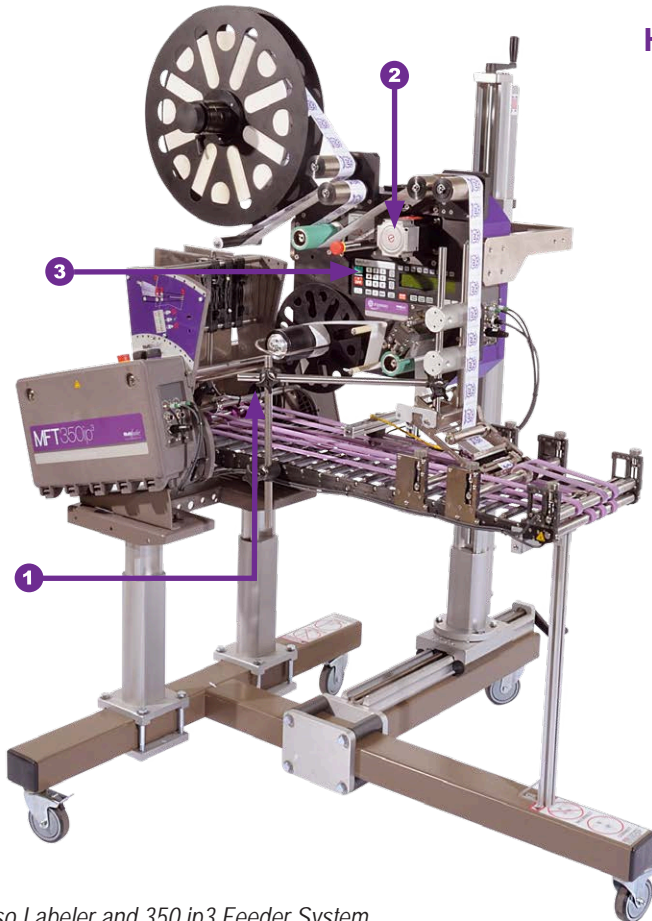


300 Millimeter Width Capability

# Impresso Labeler and Feeder System

High Performance - Reliable - Cost Effective



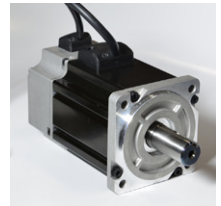
### 1 3 Piece Shaft allowing for easy belt changeover

The hardened stainless steel shafts and sealed bearings will provide maximum life expectancy and 24-hour a day operation.



### 2 Brushless Servo Motor for accurate placement

The ip<sup>3</sup> series is powered by a standard 1000 watt brushless servo motor for repeatable accuracy.



### 3 Self-contained computer controls with on-board panel

MultiFeeder's all-in-one self-contained electronics software platform is flexible to run many different types of applications. Designed for easy interface with existing computer, PLC or other host machinery.



Impresso Labeler and 350 ip3 Feeder System

## Features

- Innovative labeler design utilizes a friction feeder in a compact configuration for easy mobility.
- Highly adaptable software package ensures flexible and precise control.
- Infrared sensor allows for accurate count using double-detect and overlap detection.
- Single-sided controls provide for efficient operation.
- Easy and versatile to interface using standard industry compliant connectors.
- Performance designed for long production runs.
- Patented "feed separating" mechanism.
- Closed loop system with encoder feedback (optional).
- Small compact design is versatile to handle up to a 20" diameter roll of labels; 4" wide. Available up to 8" labels.

## Industries:

- Pharmaceutical
- Food
- Cosmetics
- Packaging
- Financial
- Printing
- Robotics

## Common equipment that the feeder can be integrated into:

- Imaging lines
- Shrinkwrappers
- Existing bases
- Conveyers
- Folder/Gluer
- Flow Wrappers
- Poly-baggers
- Case-packers
- Cartoners
- Order fulfillment
- Collators
- Banders

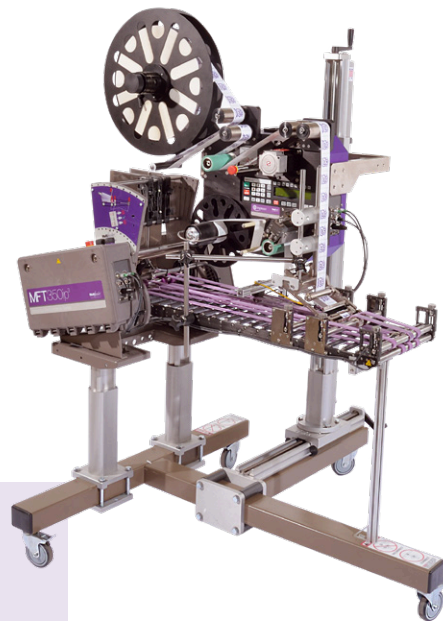
## Applications

- Insertion into a catch-tray, box or conveyor.
- Deliver a product to a secondary application.
- Batching, high speed tipping or affixing, collating systems and barcode/vision systems.

## Technical Data: Impresso Label Applicator

### Equipment Specifications

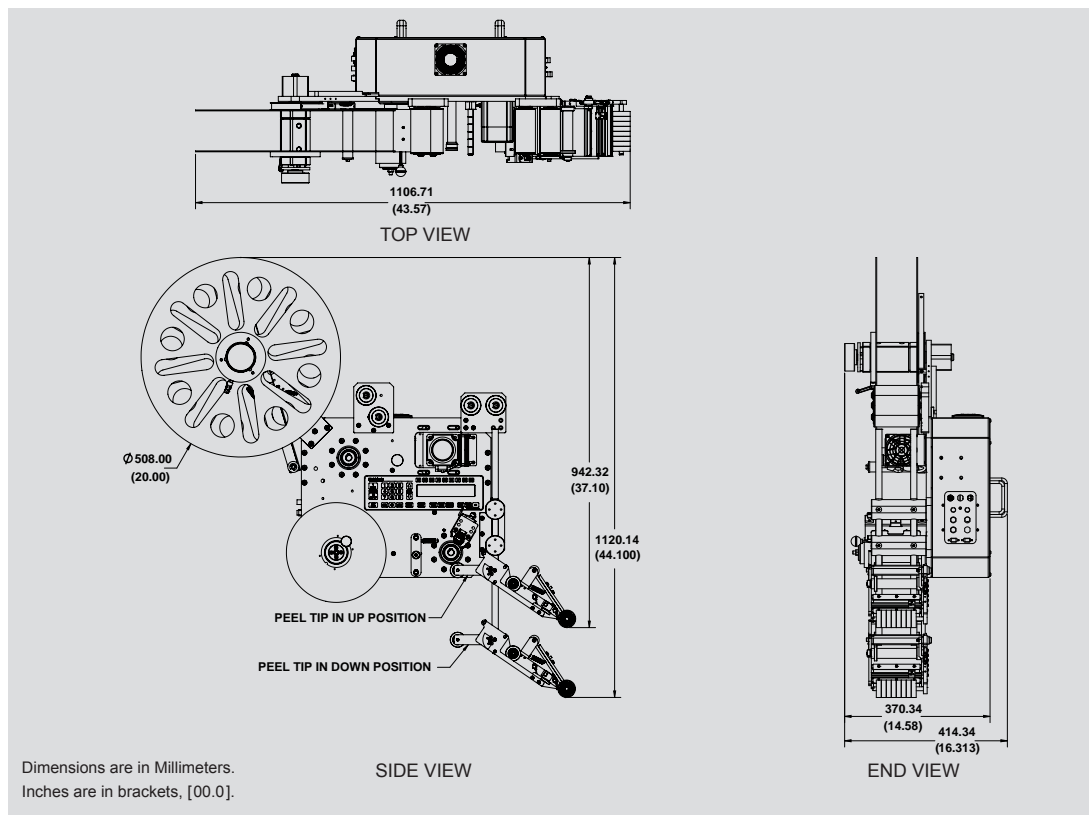
Typical Height	942mm (37.1")
Typical Length	1106mm (43.6")
Typical Width	370mm (14.6")
Maximum Speed	70 meters per minute
Power Requirements	110/220V 50-60Hz 6A
Operating Temp.	10°-35°C (50°-95°F)
Weight Ranges	Less than 80 lbs.



### Product examples to run on Impresso Labeler:

- Packaging
- Gift Cards
- Carton Blanks
- Mailers
- Cartons
- Tyvek® Sheets
- Pamphlets
- Magnets
- Pharma Inserts
- Card Stock Products
- Bandages
- And More!

### Standard Dimensional Drawing



All specifications are subject to change without notice.

### Technical Support Services



Our dedicated team of experienced Technicians and Application Engineers have the proper training and necessary credentials to answer any questions and offer system solution recommendations for your project needs.

For Technical Assistance, call 651-407-3100, select option 2.

**Multifeeder Technology** provides high performance friction feeding and labeling solutions throughout the world. With state-of-the-art control technology and robust mechanics, our products feed more quickly and accurately to provide customers with a greater value of return. All feeders, labelers and accessories can easily be integrated with other machines to provide a total system solution for any application.

**Multifeeder**  
TECHNOLOGY

[www.multifeeder.com](http://www.multifeeder.com)

© 2017 Multifeeder Technology

Multifeeder Technology®  
4821 White Bear Parkway  
St. Paul, MN 55110  
Phone: 651-407-3100  
Fax: 651-407-3199  
marketing@multifeeder.com

6/2017 Sell Sheet #068