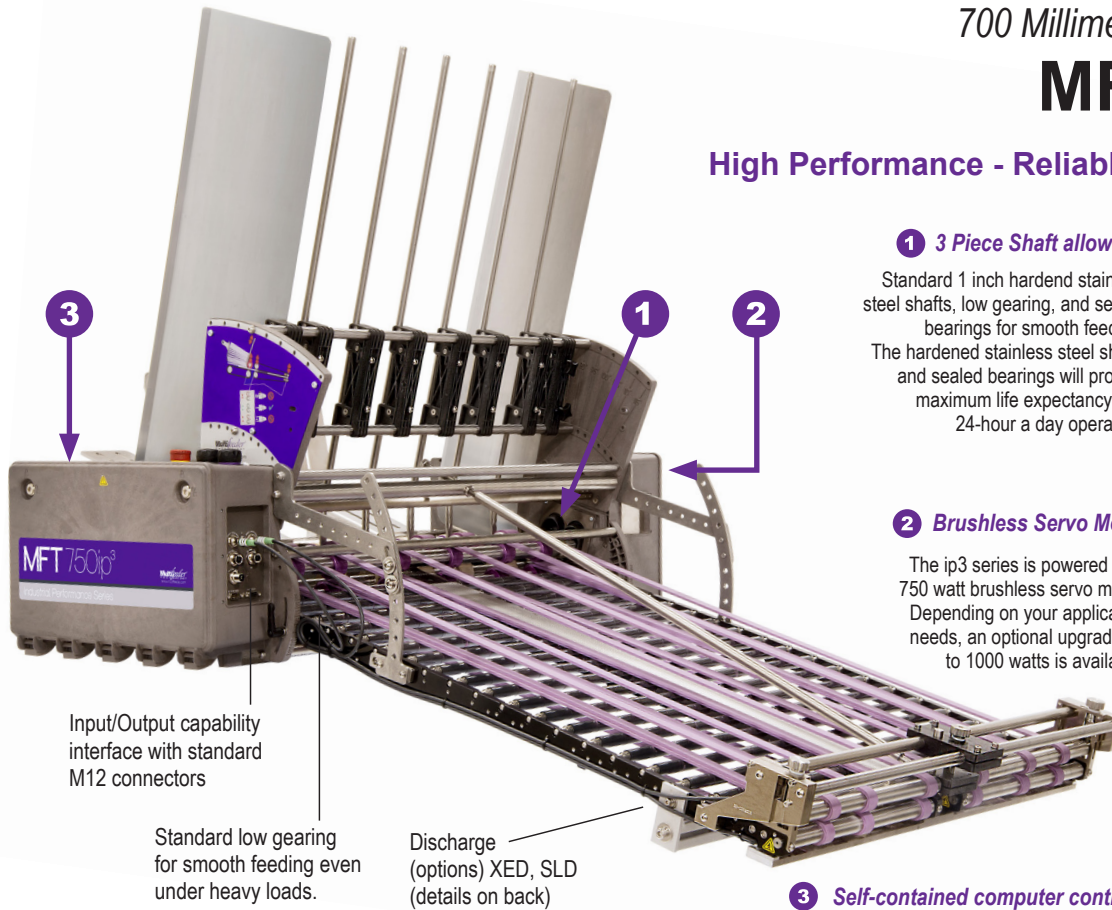


### Industrial Performance Friction Feeder Family 700 Millimeter Width Capability

# MFT 750 ip<sup>3</sup>

## High Performance - Reliable - Cost Effective



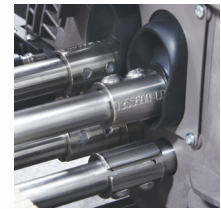
Input/Output capability interface with standard M12 connectors

Standard low gearing for smooth feeding even under heavy loads.

Discharge (options) XED, SLD (details on back)

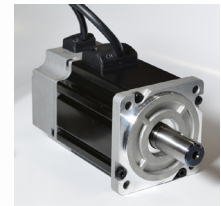
#### 1 3 Piece Shaft allowing for easy belt changeover

Standard 1 inch hardend stainless steel shafts, low gearing, and sealed bearings for smooth feeding. The hardened stainless steel shafts and sealed bearings will provide maximum life expectancy and 24-hour a day operation.



#### 2 Brushless Servo Motor for precise placement

The ip3 series is powered by a 750 watt brushless servo motor. Depending on your application needs, an optional upgrade up to 1000 watts is available.



#### 3 Self-contained computer controls with on-board panel

Multifeeder's all-in-one self-contained electronics software platform is flexible to run many different types of applications. Designed for easy interface with existing computer, PLC or other host machinery.



Friction Feeder MFT 750SLD ip3 shown with a SLD (900 mm) discharge

### Features

- Modular mechanical design for custom configurations to handle very wide product. One inch steel shafts with standard low gearing for smooth uninterrupted feeding.
- Highly adaptable software package ensures flexible and precise control.
- Infrared sensor allows for accurate count using double-detect and overlap detection\*.
- On-board interface display panel provides for efficient operation.
- Easy and versatile electrical interfacing with the use of industry standard connectors.
- Performance designed for long production runs, with easy changeover for short runs.

\*Using standard double-detect on Multifeeder ip3 feeders are for approved samples only.

### Industries:

- Pharmaceutical
- Cosmetics
- Financial
- Robotics
- Food
- Packaging
- Printing

### Common equipment that the feeder can be integrated into:

- Imaging lines
- Conveyers
- Poly-baggers
- Order fulfillment
- Shrinkwrappers
- Folder/Gluer
- Case-packers
- Collators
- Existing bases
- Flow Wrappers
- Cartoners
- Banders

### Applications

- Insertion into a catch-tray, box or conveyor.
- Deliver a product to a secondary application, such as printing or label application.
- Batching, affixing, collating systems and barcode/vision systems.

## Technical Data: MFT 750 ip<sup>3</sup>

### Equipment Specifications

Typical Height	953mm (38")
Typical Length (XED)	793mm (31")
Typical Width	1037mm (41")
Maximum Belt Speed	100 Meters per Minute*
Power Requirements	110/220V 50-60Hz 6A
Operating Temp.	10°-35°C (50°-95°F)
Weight Ranges	205 lbs.
Operating Humidity	30-90%

### Product Specifications

Minimum Size	20mm† (W) x 50mm (L)
Maximum Size*	700mm (W) x 325mm (L)‡
Minimum Thickness	0.075mm (.003")
Maximum Thickness	25mm

† Minimum product length may require narrow belt configuration.

‡ Maximum Product Length is dependent on product, equipment configuration and application. Longer lengths are available with optional upgrades.

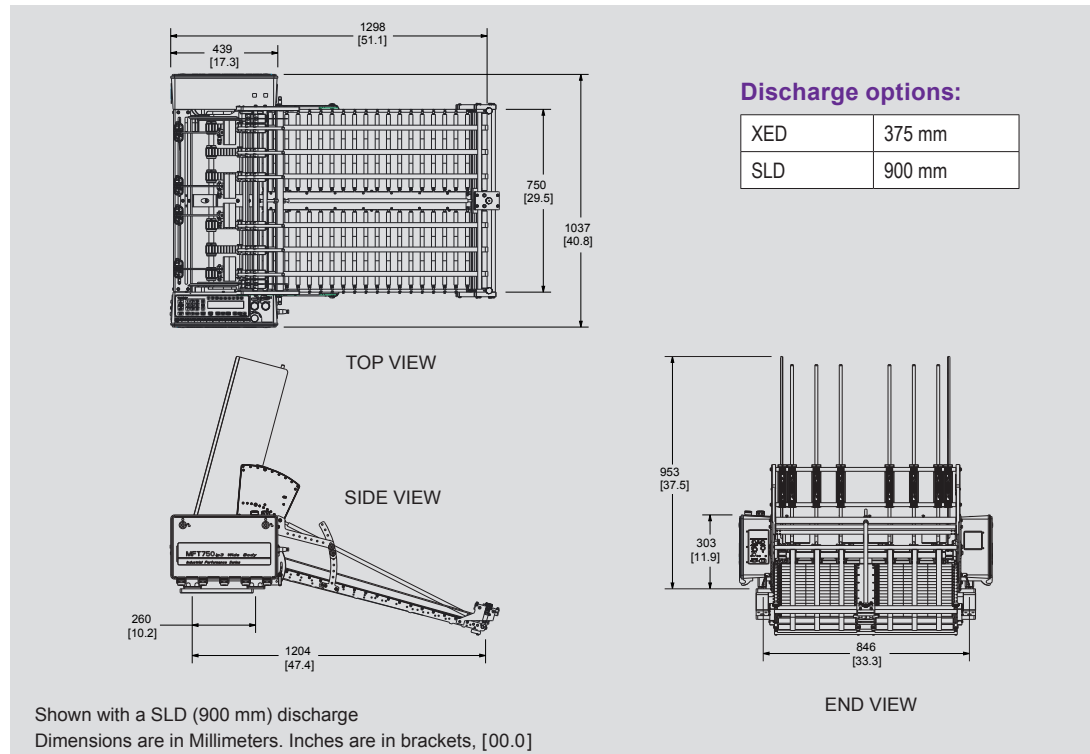
\*All Multifeeder Technology® equipment can be designed to meet your specific production requirements. Please contact one of our experienced Application Engineers to discuss many solution options available to you.

### Product examples to deliver through feeder:

*The increased discharge width of the 750 ip<sup>3</sup> allows large oversized products to feed.*

- Bags
- Gift Cards
- Carton Blanks
- Pouches
- Clear-Film Plastics- Coupons
- Tyvek® Sheets
- Pamphlets
- Magnets
- Pharma Inserts
- Card Stock Products
- Bandages
- And more

### Standard Dimensional Drawing



### Technical Support Services



*Our dedicated team of experienced Technicians and Application Engineers have the proper training and necessary credentials to answer any questions and offer system solution recommendations for your project needs. Contact us at: (651) 407-3100 ext 123*

**Multifeeder Technology** provides high premium performance friction feeding and labeling system solutions throughout the world. With state-of-the-art control technology, our products feed more quickly and accurately to provide customers with a greater value of return. All feeders and accessories can easily be integrated with other machines to provide a total system solution for any application.



[www.multifeeder.com](http://www.multifeeder.com)

© 2019 Multifeeder Technology

Multifeeder Technology®  
4821 White Bear Parkway  
St. Paul, MN 55110  
Phone: 651-407-3100  
Fax: (651) 407-3199  
[marketing@multifeeder.com](mailto:marketing@multifeeder.com)

2019-01 #092