

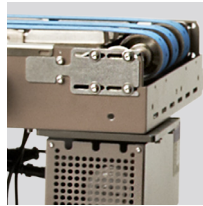
Industrial Performance Conveyors

Vacuum Track Conveyor (VTC)

High Performance - Reliable - Cost Effective

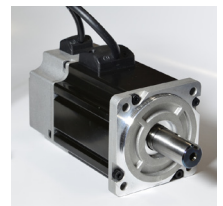
1 Various Configurations

The conveyor can be one solid belt or configured in individual belt tracks to meet your specific conveying application.



2 Brushless Servo Motor for precise placement

The VTC is powered by a 750 watt brushless servo motor. Depending on your application needs, optional upgrades to 1000 watts are available.



VTC shown with 350 ip3 Feeder

Features

- Designed to firmly control product, after it exits the feeder, in order to execute secondary operations.
- Provide better control of irregular product by spreading out product on a flat horizontal conveyor.
- Available in 2 and 4 meter lengths. Other lengths available
- Linear mounting bars provide quick mounting of optional components, such as inkjet or laser coders, scanners, vision systems and more.

Industries:

- Pharmaceutical
- Food
- Cosmetics
- Packaging
- Financial
- Printing
- Robotics

Common equipment that the feeder can be integrated into:

- Imaging lines
- Shrinkwrappers
- Existing bases
- Conveyers
- Folder/Gluer
- Flow wrappers
- Poly-baggers
- Case-packers
- Cartoners
- Order fulfillment
- Collators
- Banders

Applications

- Transport, Bar coding applications, and UPC over labeling.
- DVD, Blu-ray, and lenticular affixing.
- Integration with feeders and more.

Technical Data: VTC

Equipment Specifications

Typical Height	978mm (38.5")
Typical Length (ED)	2080mm (81.9")
Typical Width	656mm (25.8")
Maximum Belt Speed	140 Meters per Minute*
Power Requirements	110/220V 50-60Hz 6A
Operating Temp.	10°-35°C (50°-95°F)
Weight Ranges	75-125 lbs.
Operating Humidity	30-90

Product Specifications

Minimum Size	25mm† (W) x 25mm (L)
Maximum Size*	300mm (W) x 325mm (L)‡
Minimum Thickness	0.075mm (.003")
Maximum Thickness	25mm

† Minimum Product Length may require narrow belt configuration.

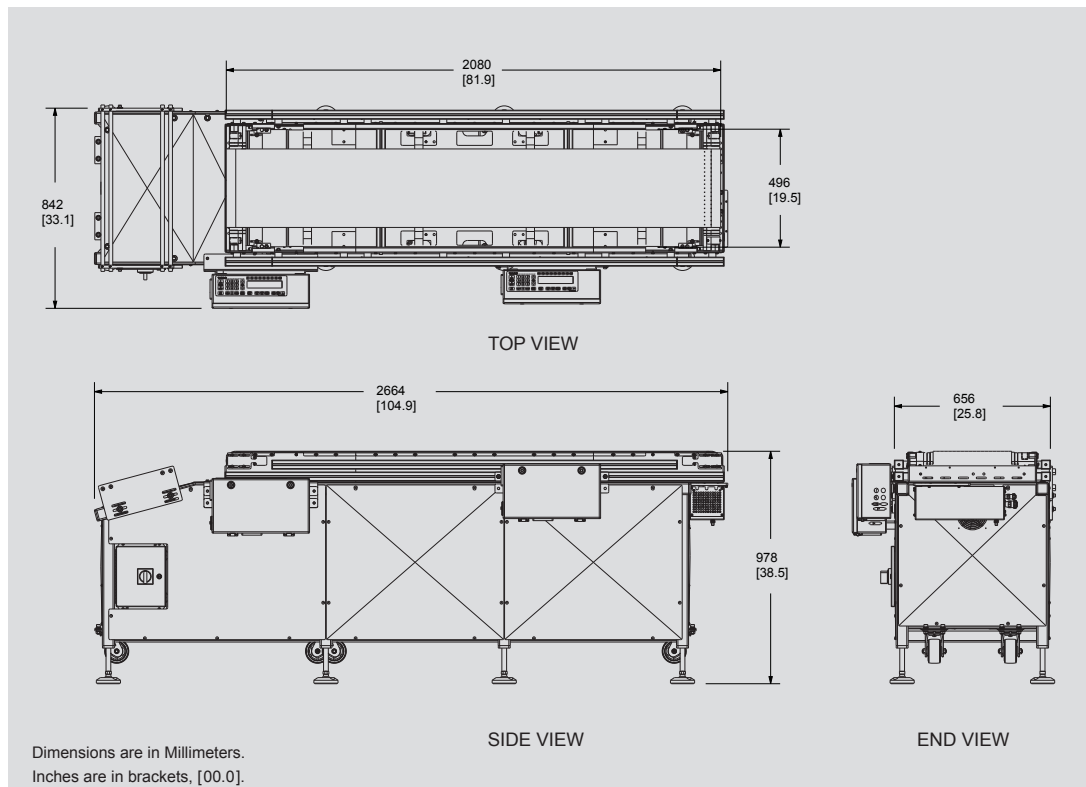
‡ Maximum Product Length is dependent on product, equipment configuration and application.

*All Multifeeder Technology® equipment can be designed to meet your specific production requirements. Please contact one of our experienced Application Engineers to discuss many solution options available to you.

Product examples to deliver through feeder:

- Bags
 - Pouches
 - Pamphlets
 - Card Stock Products
- Gift Cards
 - Clear-Film Plastics- Coupons
 - Magnets
 - Bandages
- Carton Blanks
 - Tyvek® Sheets
 - Pharma Inserts
 - And More

Standard Dimensional Drawing



All specifications are subject to change without notice. Dimensions VTC 2000 shown.

Multifeeder Technology provides high performance friction feeding and labeling solutions throughout the world. With state-of-the-art control technology and robust mechanics, our products feed more quickly and accurately to provide customers with a greater value of return. All feeders, labelers and accessories can easily be integrated with other machines to provide a total system solution for any application.

Multifeeder
TECHNOLOGY

www.multifeeder.com

© 2017 Multifeeder Technology

Technical Support Services



Our dedicated team of experienced Technicians and Application Engineers have the proper training and necessary credentials to answer any questions and offer system solution recommendations for your project needs.

For Technical Assistance, call 651-407-3100, select option 2.

Multifeeder Technology®
4821 White Bear Parkway
St. Paul, MN 55110
Phone: 651-407-3100
Fax: 651-407-3199
marketing@multifeeder.com

6/2017 Sell Sheet #063