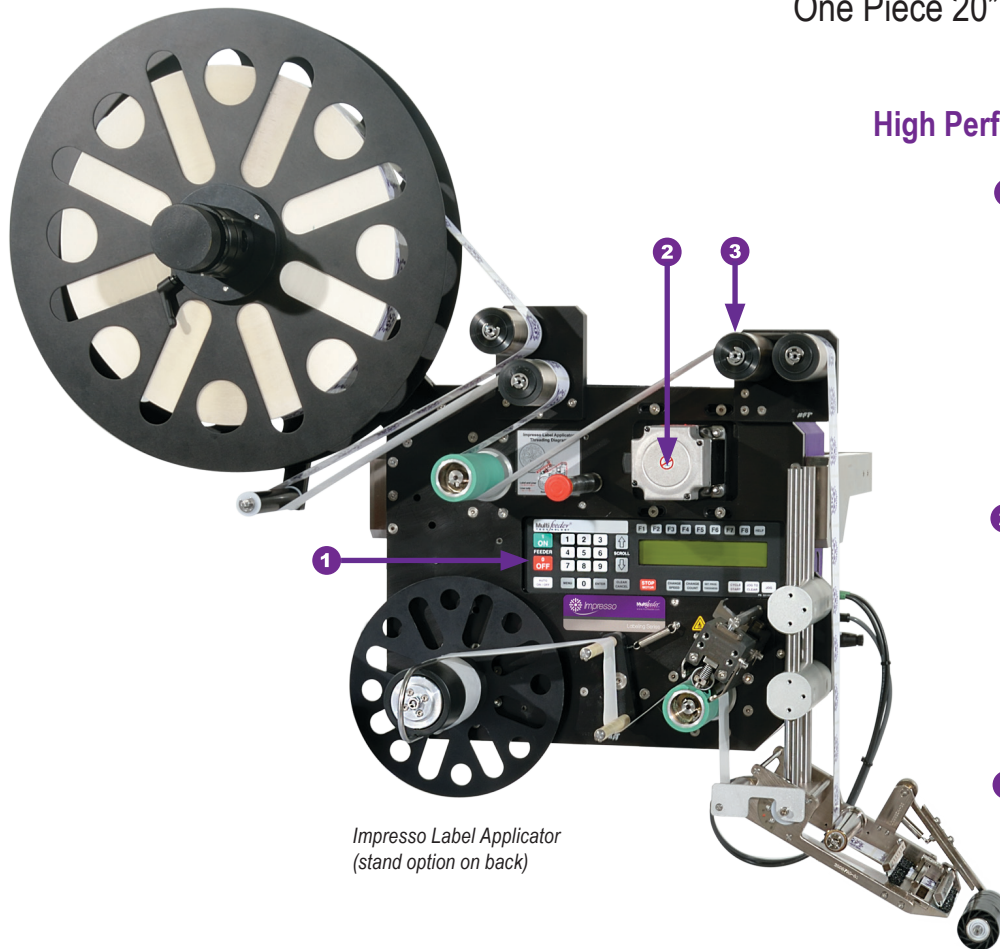


Impresso[™]

One Piece 20" Unwind/Rewind Label Applicator

High Performance - Reliable - Cost Effective



Impresso Label Applicator
(stand option on back)

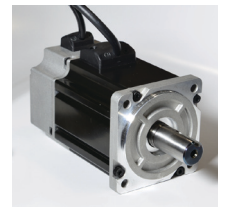
- 1** Customizable computer controls with on-board panel for accurate placement



All-in-one self-contained electronics software platform is flexible to run many different types of applications.

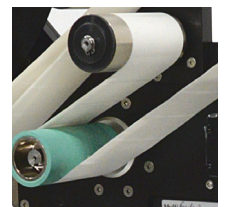
- 2** Brushless Servo Motor for accurate placement

Powered by a standard 1000 watt brushless servo motor for repeatable accuracy.



- 3** Durable steel shafts for strength

Hardened stainless steel shafts and sealed bearings will provide maximum life expectancy.



Features

- Equipped with an independently powered 1000 watt brushless servo motor for unwind and rewind.
- Designed for flexibility to stand-alone or integrate with existing production lines.
- Highly adaptable software package can integrate multiple sensor triggers to achieve accurate label placement at high speeds.
- Small compact design is versatile to handle up to a 20" diameter roll of labels; 4" wide. Available up to 8" labels.

Industries:

- Pharmaceutical
- Food
- Cosmetics
- Packaging
- Financial
- Printing
- Robotics

Common equipment that the labeler can be integrated into:

- Extended Content Labeling
- Direct Mail Tabbing
- Gap-less Magnet Application
- Gift Card Applications

Applications

- Adhere labels to packaging, cartons, folders and more.

Technical Data:
MFT Impresso Label Applicator

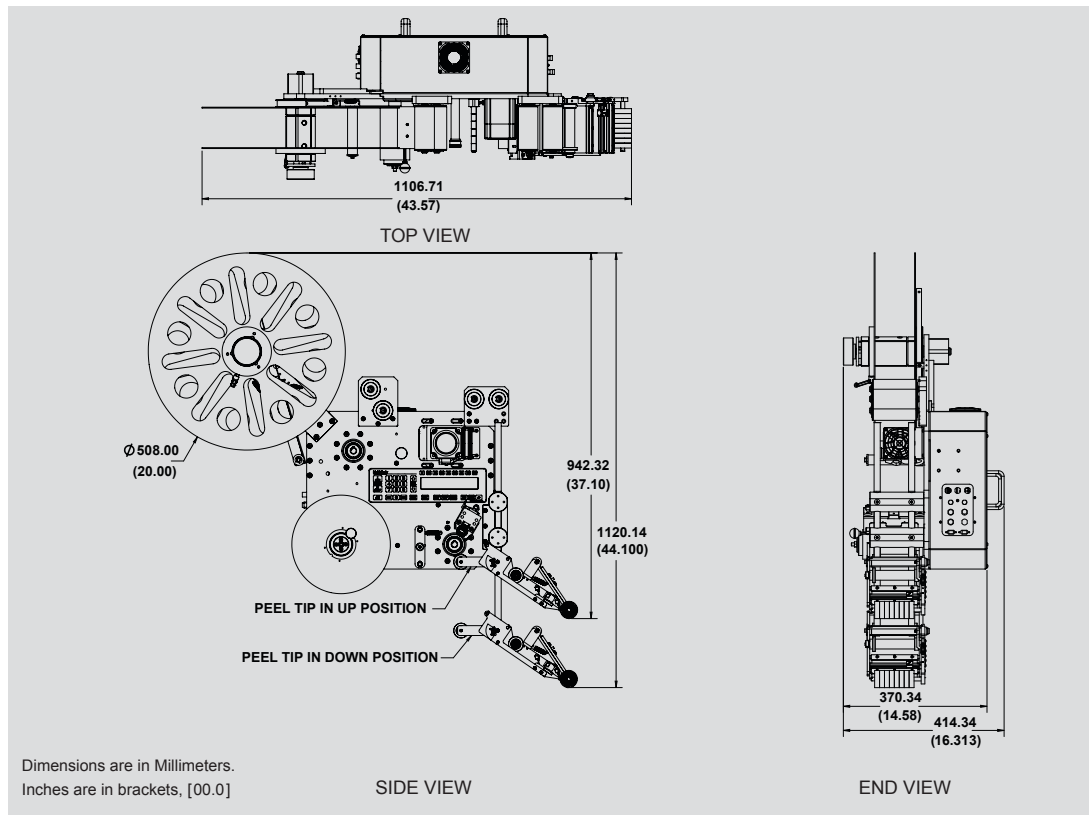
Equipment Specifications

| | |
|--------------------|----------------------|
| Typical Height | 942mm (37.1") |
| Typical Length | 1106mm (43.6") |
| Typical Width | 370mm (14.6") |
| Maximum Speed | 70 meters per minute |
| Power Requirements | 110/220V 50-60Hz 6A |
| Operating Temp. | 10°-35°C (50°-95°F) |
| Weight Ranges | Less than 80 lbs. |

Stand Option



Standard Dimensional Drawing



All specifications are subject to change without notice.

Technical Support Services



Our dedicated team of experienced Technicians and Application Engineers have the proper training and necessary credentials to answer any questions and offer system solution recommendations for your project needs.

For Technical Assistance, call 651-407-3100, select option 2.

Multifeeder Technology provides high performance friction feeding and labeling solutions throughout the world. With state-of-the-art control technology and robust mechanics, our products feed more quickly and accurately to provide customers with a greater value of return. All feeders, labelers and accessories can easily be integrated with other machines to provide a total system solution for any application.



www.multifeeder.com

© 2017 Multifeeder Technology

Multifeeder Technology®
 4821 White Bear Parkway
 St. Paul, MN 55110
 Phone: 651-407-3100
 Fax: 651-407-3199
marketing@multifeeder.com

5/2017 Sell Sheet #041